

# Toad™ Data Modeler

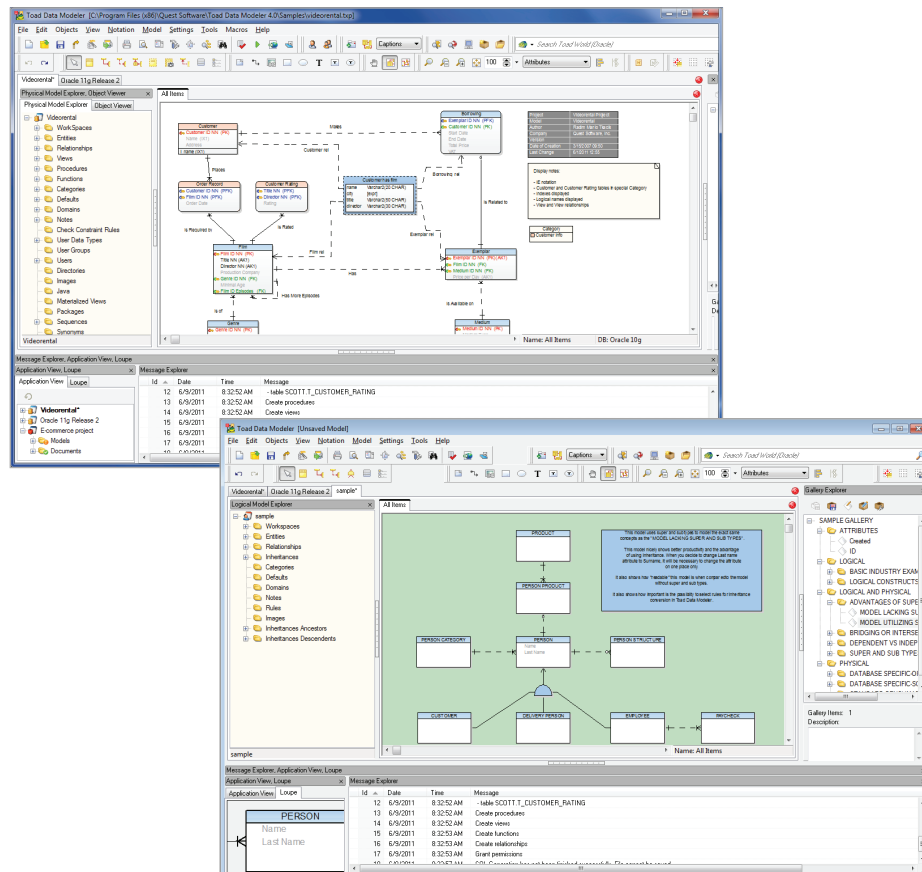
Powerful and cost-effective database modeling and design

Whether you're a data modeler, DBA, or developer, you need a simple-to-use data modeling tool for database design, data structure modification and document creation. Enterprise solutions are too expensive and so complicated they often require in-depth training, which interferes with productivity.

Toad Data Modeler simplifies database design, maintenance and documentation — at a price your organization can afford. This powerful data modeling solution supports

everyday design and modification tasks, making it easier than ever to:

- Create high-quality logical and physical data models
- Visualize and understand data structures and relationships
- Deploy accurate changes to the data structure
- Document projects for better team communication



“I’ve used quite a few other tools, and I can only conclude that Toad Data Modeler is without question the killer app in this category.”

*Steve Callan  
databasejournal.com*

## BENEFITS:

- Supports both forward and reverse engineering
- Offers compare and sync (model to model, model to database and database to model)
- Supports multiple databases, including Oracle®, IBM® DB2®, SQL Server®, MySQL® and SAP®
- Provides an intuitive interface
- Requires minimal space and designed for easy installation

## FEATURES AND BENEFITS

### Perform logical and physical data modeling

Model actual business requirements and transform the model into a perfectly matching technical implementation, without losing any of the business context in the process.

### Compare and synchronize data structures

Compare and synchronize separate models, with complete visual representations of the key differences with intuitive, yet robust model compare and merge wizards.

### Generate alter scripts

Generate SQL scripts with "ALTER" commands to synchronize the data model and database.

### Reverse engineer

Re-draw the database structure, insert the model into the internal version manager or generate new SQL (DDL) scripts.

### Manage versions

Create projects, versions and revisions. Also, add logical and physical models, and other files (for example, test files and image) to the projects.

### Enable extensibility

Modify every object in the scriptable application. Toad Data Modeler is a highly customizable program that adjusts to your organization's needs or requirements.

### Edit on screen

Select a database object from the physical model and simply change it on the screen for significant time-savings. Copy, cut and paste items such as attributes and columns across objects and models. Standard Microsoft Windows drag-and-drop shortcuts can also be utilized.

### Customize the user interface

Save a favorite screen design by right-clicking on the screen and choosing "edit."

## ABOUT QUEST

Quest helps our customers reduce tedious administration tasks so they can focus on the innovation necessary for their businesses to grow. Quest® solutions are scalable, affordable and simple-to-use, and they deliver unmatched efficiency and productivity. Combined with Quest's invitation to the global community to be a part of its innovation, as well as our firm commitment to ensuring customer satisfaction, Quest will continue to accelerate the delivery of the most comprehensive solutions for Azure cloud management, SaaS, security, workforce mobility and data-driven insight.

## SYSTEM REQUIREMENTS

### PROCESSOR

1GHz or faster 32-bit (x86) or 64-bit (x64) CPU

### MEMORY

Minimum 1GB, 4GB recommended

### HARD DISK SPACE

Minimum 400MB, 1GB recommended

### OPERATING SYSTEMS

Microsoft® Windows Vista® (32-bit or 64-bit)

Microsoft Windows Server® 2003 (32-bit or 64-bit, Service Pack 2), 2008 (32-bit or 64-bit), 2008 R2 (64-bit), 2012 (64-bit)

Microsoft Windows 7 (32-bit or 64-bit)

Microsoft Windows 8 Pro, 8.1 Pro (64-bit)

Microsoft Windows 10 (64-bit)

### DATABASE SERVER

Greenplum® 4.1, 4.2

IBM DB2 LUW 8, 9.0, 9.5, 9.7, 10.1, 10.5

IBM DB2 z/OS 9, 10, 11

Ingres® 9.3, 10.0

Microsoft Access® 2000–2003, 2007–2010

Microsoft Azure

Microsoft SQL Server 2000, 2005, 2008, 2012, 2014

MySQL 5.0, 5.1, 5.5, 5.6, 5.7

Oracle 9i, 10g, 11g R1, 11g R2, 12c

PostgreSQL® 8.1, 8.2, 8.3, 8.4, 9.0, 9.1, 9.2, 9.3, 9.4, 9.5

SQLite® 3.7

SAP ASE 12.5, 15, 15.5, 15.7, 16.0

SAP IQ 15.2

SAP SQL Anywhere® 11

Teradata® 13

### CLOUD DATABASE SERVER

Oracle databases running on Amazon EC2®

SQL Server running on Microsoft Azure

MySQL database running on Amazon Relational Database Service (RDS)

### ADDITIONAL SOFTWARE

Any PDF reader (for viewing the installation guide)

## Quest

4 Polaris Way, Aliso Viejo, CA 92656 | [www.quest.com](http://www.quest.com)  
If you are located outside North America, you can find local office information on our Web site.

© 2016 Quest Software, Inc. ALL RIGHTS RESERVED. Quest, Toad and the Quest logo are trademarks and registered trademarks of Quest Software Inc. For a complete list of Quest marks, visit [www.quest.com/legal/trademarks.aspx](http://www.quest.com/legal/trademarks.aspx). All other trademarks and registered trademarks are property of their respective owners.  
DataSheet-ToadDataModeler-US-KS-24796