

Enterprise Reporter Suite

Simplified Microsoft platform security, compliance and reporting

Systems and security administrators are responsible for a wide range of assignments today, including security assessments, pre- and post-migration analyses, and resource optimization and allocation. On a daily basis, they are tasked with answering questions like these:

- Who can do what in Active Directory (AD) and Azure AD?
- Which mailboxes have been migrated and reside in a hybrid Exchange deployment?
- Who has access to which printers, shares, folders, files and Microsoft SQL Server databases?
- What resources are hosted in Azure, and who has access?
- How are my servers configured?
- What local users and groups exist on every server, and what is the group membership?

With manual methods, answering these questions is a Herculean task that eats up time better spent on other projects. Moreover, the task is error-prone, leaving you vulnerable to security breaches.

Only one solution identifies the current and historical configuration of Microsoft systems to help administrators quickly and efficiently answer these questions. Quest® Enterprise Reporter Suite helps you keep your Microsoft environment — both on premises and cloud-based — secure and compliant. Comprehensive access assessments and built-in reporting provide deep visibility into Active Directory/Azure AD, Azure resources, Exchange/Exchange Online, Microsoft Teams, OneDrive for Business, Windows servers, SQL servers, network-attached storage (NAS) and storage area networks (SANs), including users, groups, permissions, applications, resources, virtual machines (VMs) and other configurations.

Plus, Enterprise Reporter Suite includes Quest® Security Explorer®, so you can quickly take action from within the Enterprise Reporter user interface to remove any inappropriate permissions. Security Explorer provides an array of additional security features, such as the ability to quickly grant, revoke, clone, modify and overwrite permissions from a central

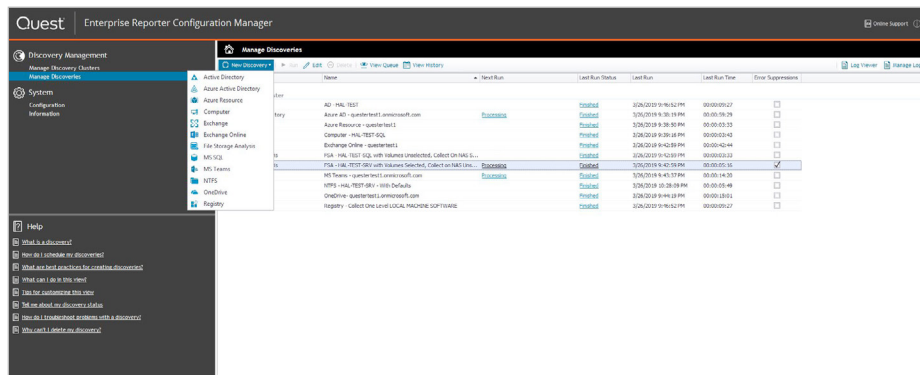


Figure 1: Enterprise Reporter collects, stores and reports on the configuration of Active Directory/Azure AD, Exchange/Exchange Online, Microsoft Teams, OneDrive for Business, Windows servers, SQL servers, NAS and SANs.

“Enterprise Reporter is so easy to use. The report templates are very helpful and can be customized within a matter of minutes to gather the data needed.”

System Administrator, Small Business Banking Company
Source: TechValidate

BENEFITS:

- Deliver real-time assessments into who has access to what resources across your Microsoft environment, both on premises and in the cloud
- Avoid group sprawl in your Office 365 environment with visibility into what Microsoft Teams are being created and how they're being used.
- Improve security and compliance by increasing visibility into the configuration of critical IT assets while maintaining proper separation of duties
- Optimize Office 365 license allocation and service plan decisions with visibility into your tenants, subscriptions and licensing service plans, and Azure resource optimization with visibility into virtual machines and disk utilization
- Is scalable, secure and customizable to support large and complex Windows environments with multiple groups of report consumers

Enterprise Reporter simplifies Microsoft platform security and compliance with unified reporting on the configuration of Active Directory/Azure AD, Exchange/Exchange Online, Microsoft Teams, OneDrive for Business, Windows servers, SQL servers, NAS and SANs.

SYSTEM REQUIREMENTS

For a complete list of system requirements, see the [Release Notes](#).

location. This combination of reporting and remediation facilitates security and compliance, enabling you to stay ahead of security vulnerabilities to prevent breaches.

FEATURES

Enterprise Reporter features

- **Security and compliance visibility** — Improve compliance with security best practices, internal policies and external regulations with visibility into the configuration of all critical IT assets in your Windows environment:
 - **Active Directory/Azure AD** — AD users, groups, roles, organizational units and permissions; Azure AD users, groups, roles, applications and service principals
 - **Exchange/Exchange Online** — Mailboxes, mailbox folders, mail-enabled users, distribution groups, public folders, permissions and more
 - **Office 365** — The configuration of critical IT assets in Azure AD, Exchange Online, Microsoft Teams and OneDrive for Business
 - **Windows servers** — On-premises shares, files, folders, printers, registry keys and services
 - **OneDrive for Business** — File and folder permissions, including whether content can be shared internally or externally
 - **SQL Server** — Database security configuration, including users, logins, roles and database permissions
 - **Azure resources** — VMs, disks, network security groups, storage accounts and more
- **Access assessment** — Know who has access to what resources across the enterprise network. Tighten security and pass IT audits by ensuring that access is provided strictly on a need-to-know basis.
- **Visibility into tenants, subscriptions and licensing** — Easily optimize Office 365 license allocation and service plan decisions with visibility into your tenants, subscriptions and licensing service plans.
- **Hosted resource optimization** — Optimize Azure resource usage by gaining visibility into VMs and disk deployment, including how many, how large, how they are configured and more, so you can save on unnecessary and underutilized resources.
- **Pre- and post-migration analyses** — Plan for a migration or consolidation project with increased visibility to user and group dependencies, object matches and potential conflicts, and unused or disabled accounts as well as where resources, computers, files and folders exist. Easily decide what needs to be migrated before you begin, and ensure the correct data and permissions were migrated after the move.
- **Microsoft Teams assessment** — Quickly discover and report on what Microsoft Teams exist in your Office 365 environment, who the Team members are, and how the Team is being used. Enterprise Reporter for Office 365 makes it easy to stay on top of Microsoft Teams growth to avoid group sprawl and monitor usage.
- **Improved insights with Quest IT Security Search** — Correlate disparate IT data from numerous systems and devices into an interactive search engine for fast security incident response and forensic analysis. Include user entitlements and activity, event trends, suspicious patterns and more with rich visualizations and event timelines.
- **Capacity planning** — Report on and manage storage capacity planning and allocation on a variety of devices, including Windows file servers, NAS and SANs.
- **Scalable data collection** — Scale to environments of any size and geographic distribution. Schedule collections during off-peak hours to minimize the impact of data collection on network and server performance, and leverage the distributed collection architecture for load balancing.
- **Efficient storage** — Reduce database storage requirements and save more change history data by comparing discoveries and storing only the changes.
- **Automated reporting workflows** — Ensure stakeholders get the reports they need, when they need them, with automated report generation and flexible scheduling of report delivery.
- **Separation of duties (SoD)** — Honor departmental and business function boundaries by enabling auditors, help desk staff, IT managers and other stakeholders to get exactly the reports they need and nothing more.

EXAMPLES OF BUILT-IN REPORTS BY CATEGORY

Active Directory Reports:

Information for Users, Groups, Domains and more
Duplicate Domain and Matching (Computers, Groups, Users)

Azure Active Directory Reports:

Tenant Information
Application Service Principals
Azure Users, Roles, Groups, and Members

Microsoft Teams:

Teams and Members
Team Owner Information

Azure Resources:

Resource Access, Group, Subscription Information
Storage Account Information
Virtual Machine and Disk Information

OneDrive for Business Reports:

Configuration Settings
Drive Information and Permissions

Exchange/Exchange Online:

Distribution Groups
Mailbox Permissions
Public Folder Permissions

Windows File Server:

File and Folder Information and Permissions

Hybrid:

OneDrive and NTFS File and Folder Permissions

SQL Server:

Instance, Permissions, Roles, Users and more

File Storage Analysis:

Capacity planning
File and folder, share and user reports

[View Full Report List](#)

- **Customizable reports** — Perform effective data analysis that meets the unique informational needs of your organization using predefined reports or creating new reports. Customize with advanced filtering and export multiple formats, including PDF, HTML, MHT, RTF, XLS, XLSX, CSV, text and images.
- **Common reporting portal** — Export reports to our software knowledge portal for a unified reporting interface across the entire family of Quest security and compliance solutions.

Security Explorer features

- **Centralized permissions management** — Make targeted or bulk changes to servers with the ability to grant, revoke or modify permissions. View and manage group membership settings directly in the access control list for a resource. Overcome access-denied errors by forcing permissions onto protected objects.
- **Enterprise-wide rights review** — Eliminate the need to manually search each server for permissions. Search for inherited or explicit permissions on AD, file servers, Exchange server, SQL Server and SharePoint. Even search for permissions to services, tasks, users and groups.
- **Advanced security and permissions** — Quickly back up permissions to take a baseline of your access controls, and revert

to that baseline at any time to easily recover from accidental or malicious changes without having to restore data. Improve security and ensure that compliance requirements are enforced.

- **Complete reporting** — Export a database or spreadsheet listing the permissions on items anywhere in the directory tree. Filter the results to show only permissions that differ from the parent folder. Perform targeted searches for all locations that a particular group or user has access to across the network, and export this data to create ad hoc security reports.
- **Intuitive access controls** — Back up and restore security settings to an alternate location, so you can be sure that appropriate access is in place on the new servers.

ABOUT QUEST

Quest provides software solutions for the rapidly changing world of enterprise IT. We help simplify the challenges caused by data explosion, cloud expansion, hybrid data centers, security threats and regulatory requirements. Our portfolio includes solutions for database management, data protection, unified endpoint management, identity and access management and Microsoft platform management.